



The St. Lawrence
Seaway Management
Corporation

Corporation de Gestion
de la Voie Maritime
du Saint-Laurent

**The St. Lawrence
Seaway**

**Resilient
Predictable
Sustainable**

**Jim Athanasiou
President and CEO**





Jim Athanasiou

President and CEO
The St. Lawrence Seaway
Management Corporation

Highlights

Seaway Expertise

- 15+ years in engineering, business improvement, and technology roles at the Seaway.

Driving Change

- Proven track record in implementing innovative solutions and improving operational efficiency.


Collaborative Leadership

- Passionate about teamwork and fostering partnerships for mutual success.

Community & Stakeholder Focus

- Committed to delivering value through sustainable practices and stakeholder engagement.

The Seaway

 The Great Lakes – St. Lawrence Seaway System extends 3,700 kilometres from the Atlantic Ocean to the head of Lake Superior.

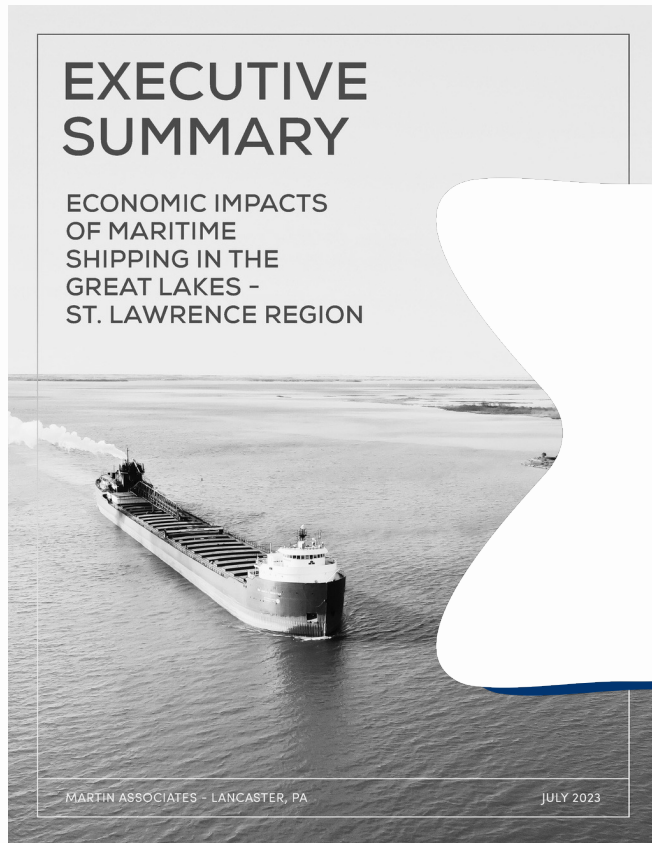
 Major Ports

 Administered by the St. Lawrence Seaway Management Corporation

 Administered by The Great Lakes St. Lawrence Seaway Development Corporation

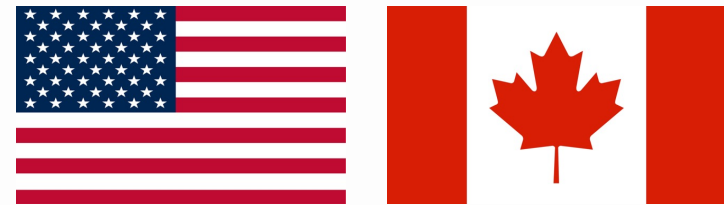


Economic Impact



\$51 billion USD
\$66 billion CAD

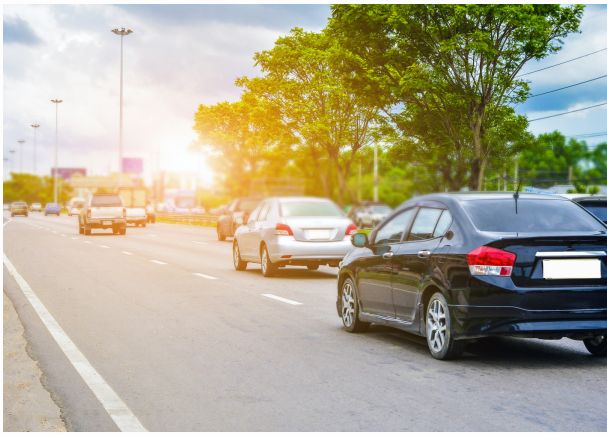
in economic activity



357,000

jobs supported

Beyond the Numbers



Ports Play an Important Role



Delivering Reliable Service



Investing in Our Infrastructure

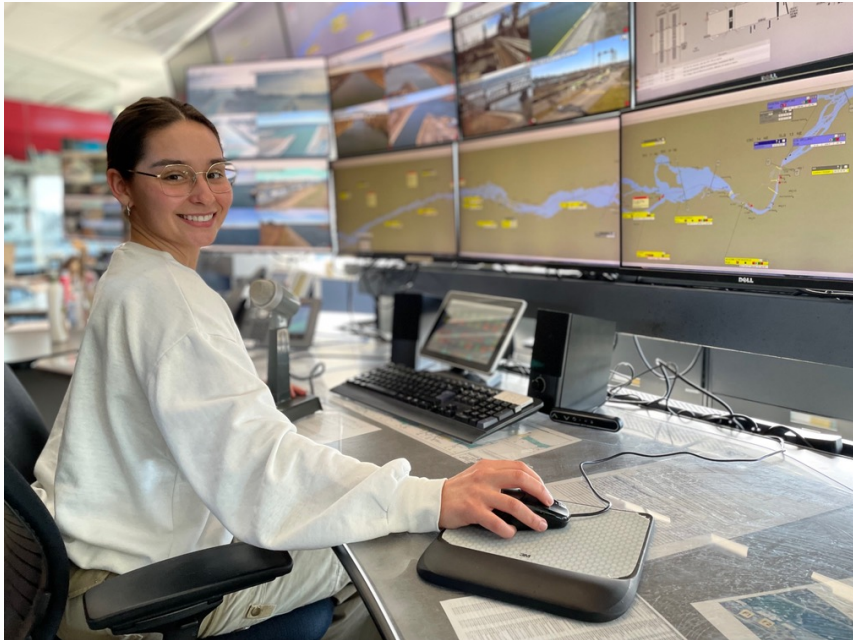


Season Optimization

Predictable and Consistent Opening and Closing Dates



Innovation in Action



Sustainable Future



Growth Potential



Collaborating for a Stronger Future

