

VIS

Voyage Information System



**The St. Lawrence
Seaway Management
Corporation**

**Corporation de Gestion
de la Voie Maritime
du Saint-Laurent**

JACK MELOCHE

General Manager,
Marine Information Systems

The St. Lawrence Seaway
Management Corporation



What is VIS

Bi-National Project:

- Central data-sharing environment for Seaway stakeholders.

Core Functions:

- Extends the capabilities of the Seaway Traffic Management System to optimize schedules, address inefficiencies, and contribute to improved environmental performance.





Key Stakeholders Include



carriers, agents,
pilotage authorities,
coast guards, ports & terminals

Initial / Beta Contributors

CSL



PORT
CLEVELAND



HAMILTON
PORT AUTHORITY



ROBERT REFORD



VIS Framework



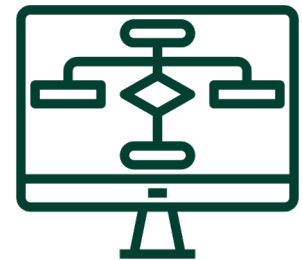
Data From Partners



Connectivity Platform
Prediction Engine



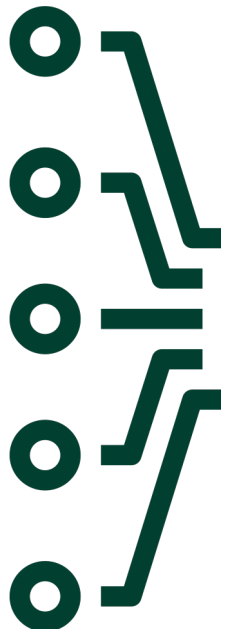
VIS



Seaway TMS

Protecting Data, Enhancing Insights

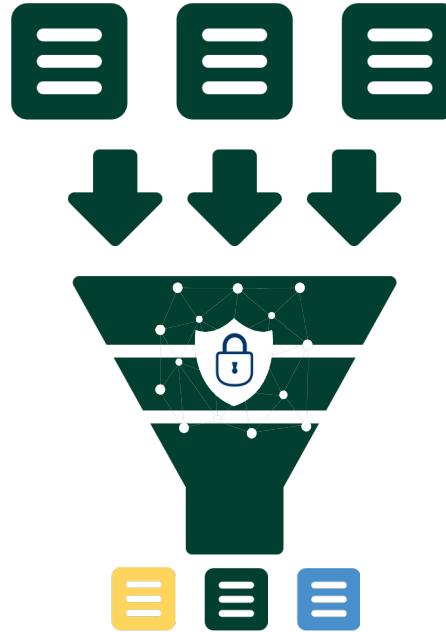
Stakeholder Data
Your Data = Our Priority



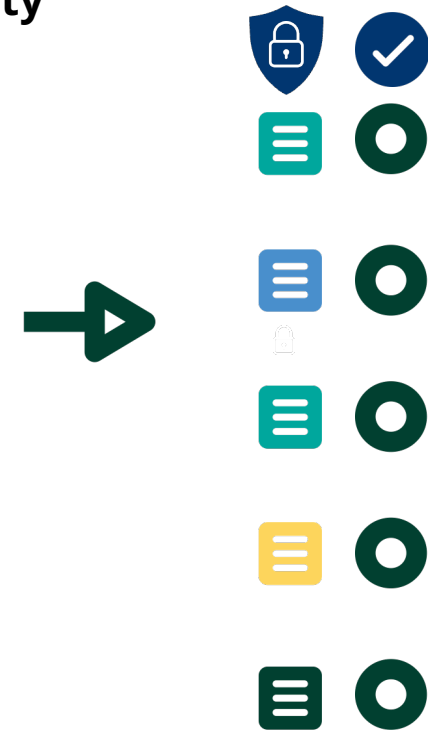
VIS Input
Centralized Data Entry



Data Filtering and Security
Governance and Protection



Stakeholder Access
Tailored Insights



Benefits



Reduced Info Redundancy



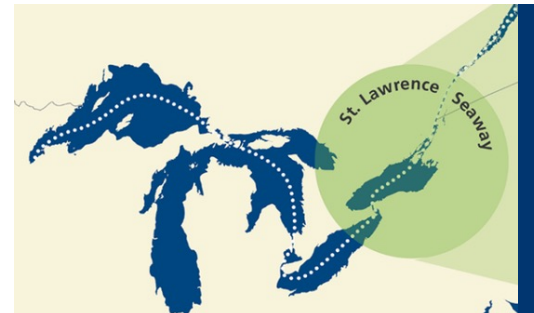
Reduced Wait Times



Improved Resource Planning



Optimized Fuel Consumption



Improved System Visibility

JULIEN BERTRAND

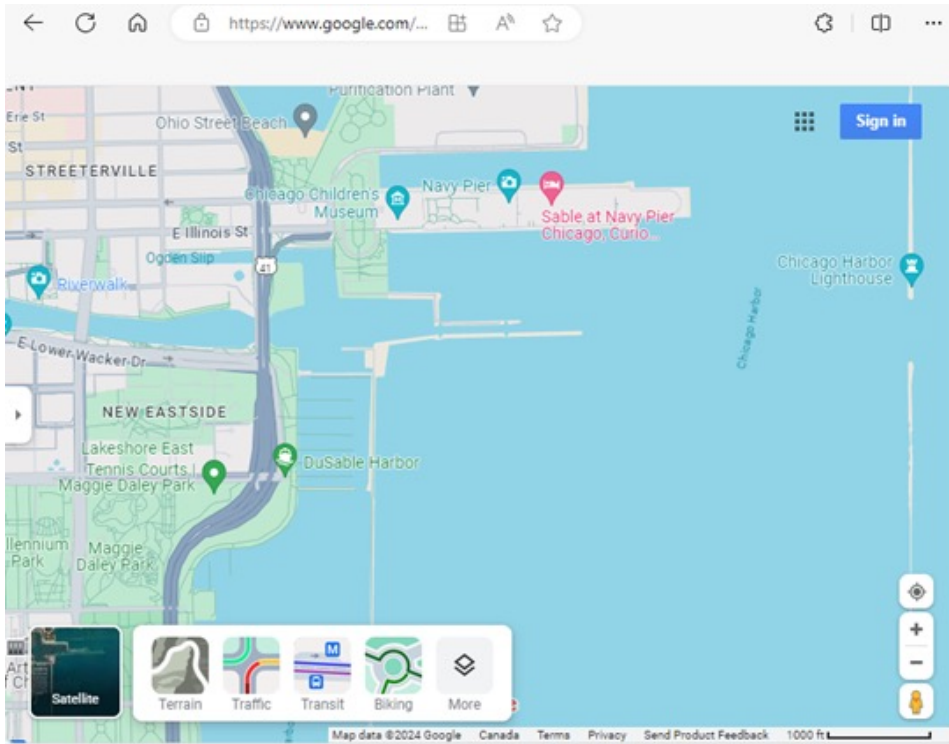
Operations Analyst

The St. Lawrence Seaway
Management Corporation

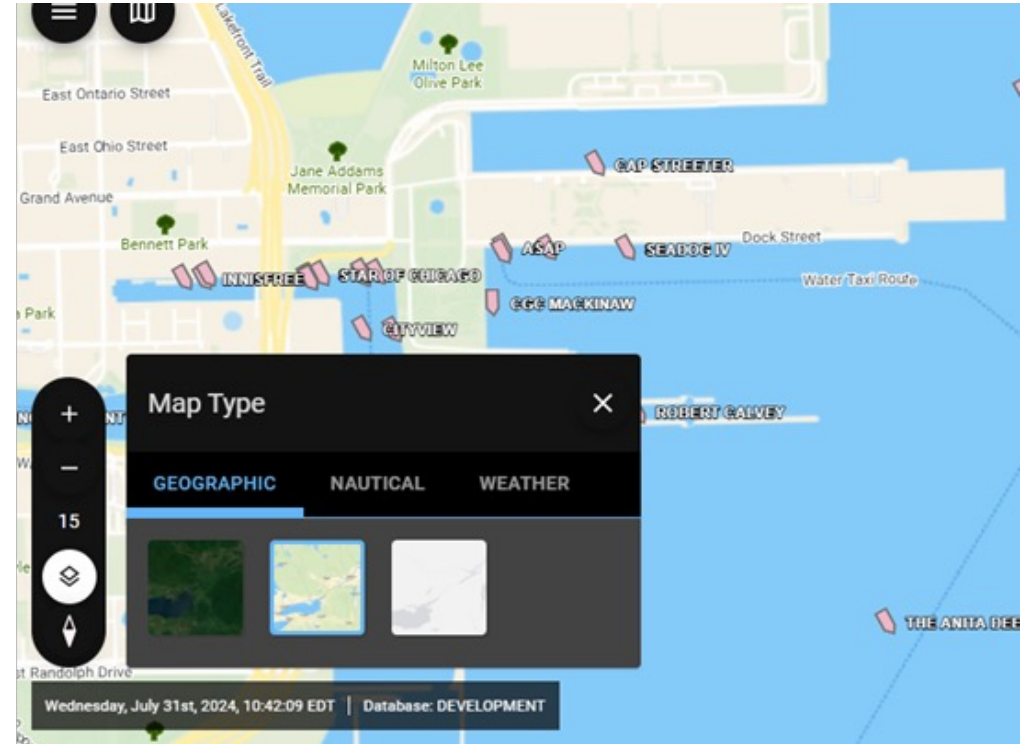


Easy to Use: Familiar Look and Feel

Google Maps



VIS

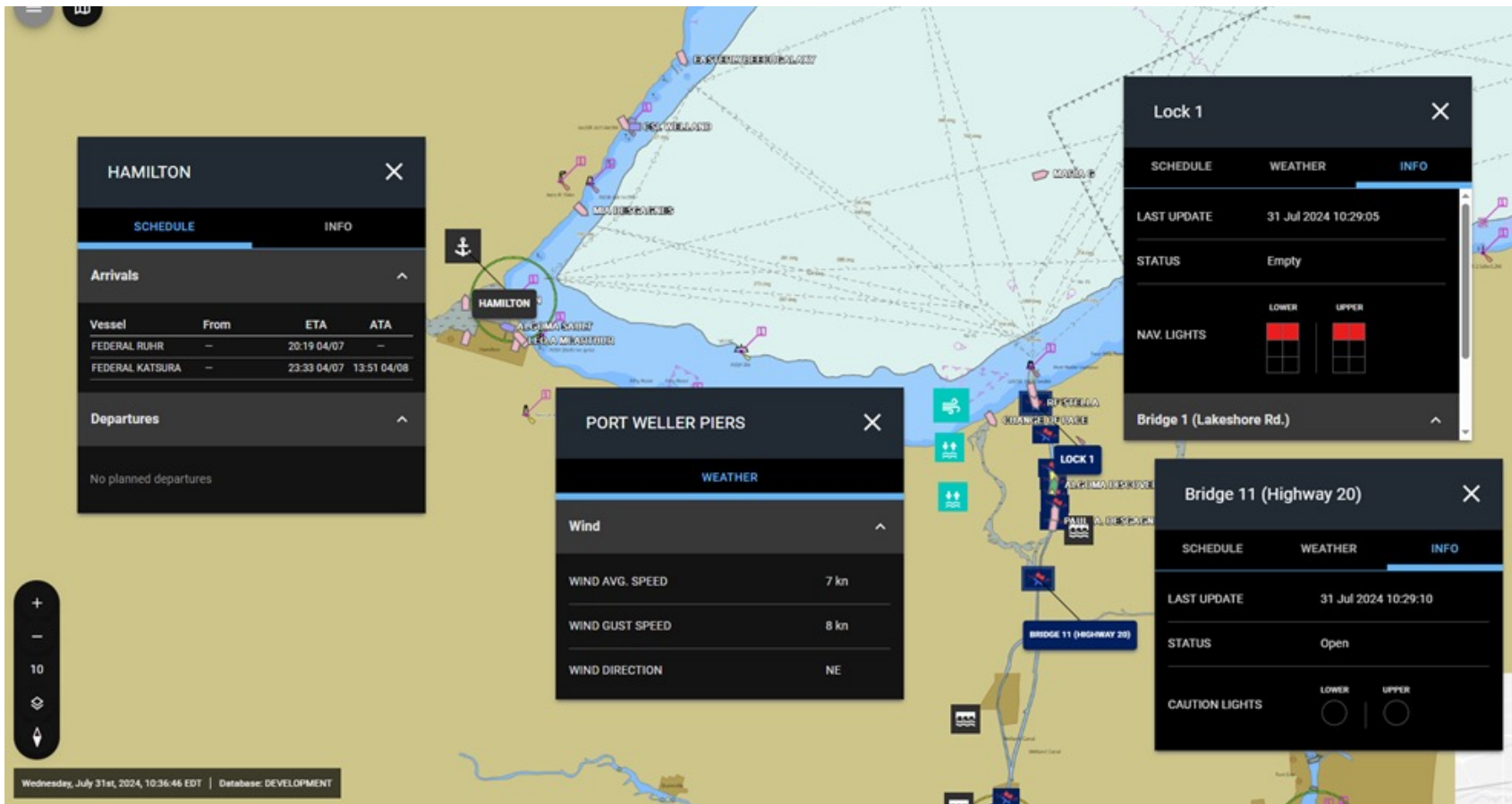


Customizable Display

The image displays three overlapping dark-themed user interface panels. The leftmost panel, titled "Vessel Lists", features a vertical sidebar with icons for menu, list, settings, help, and user profile, and a list of vessel names: CIP 15, CIP 16, Clarkson, Clayton, Cleveland, and Cobourg. The middle panel, titled "Vessel Filters", shows "1649 vessels matched" and a list of filter categories: Vessel Type, Vessel Fleet, Destination, Last Updated, Vessels with Transit, Pilot Requirement, and Navigation Status. The rightmost panel, titled "Display Preferences", lists settings: Vessel Nametag Information, Vessels, Layers, Ice Booms, Zoom Level Display, and Others. The far-right panel, titled "Profile", shows the user "jbertrand" with a "SIGN OUT" button and "Profile Settings" including: "Select Preferred Language" (English), "Maximum Age of AIS or ATA data (Days)" (60), "Geographic Coordinate Format" (Degrees and Decimal Minutes), "Time Zone" (Local), and "Units" (Metric). Each panel has "CANCEL" and "APPLY" or "SUBMIT" buttons at the bottom.

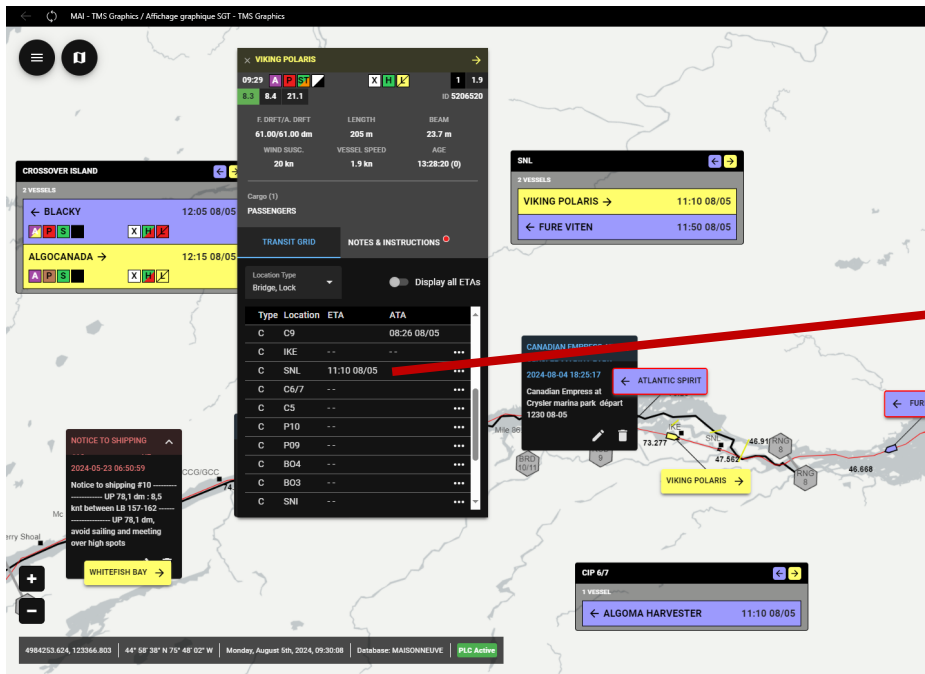


Real-Time Data

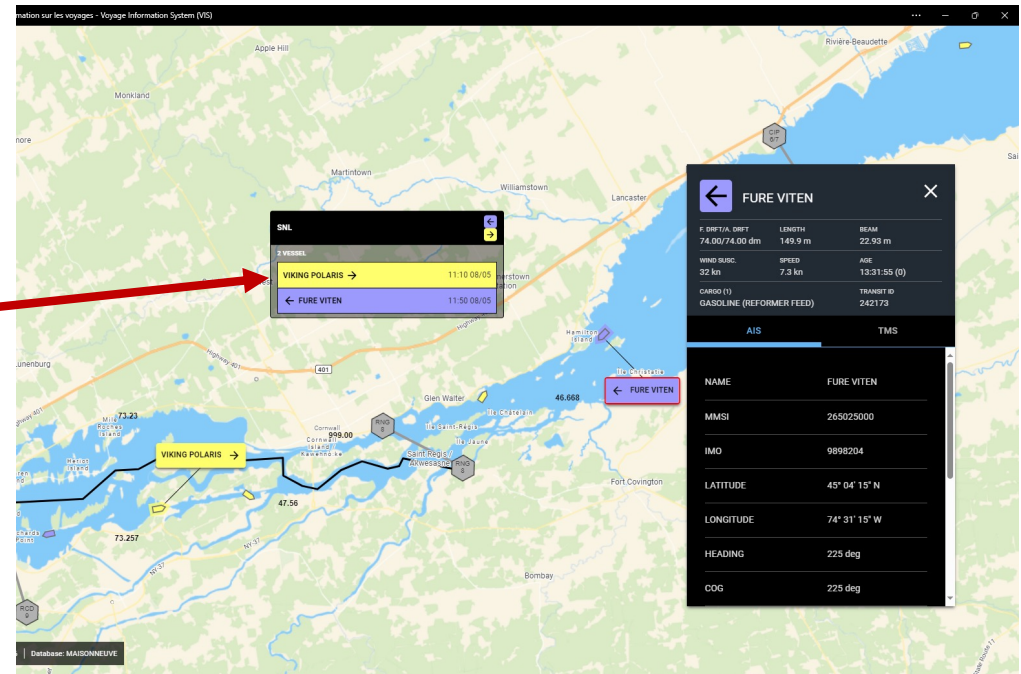


Enhanced Communications

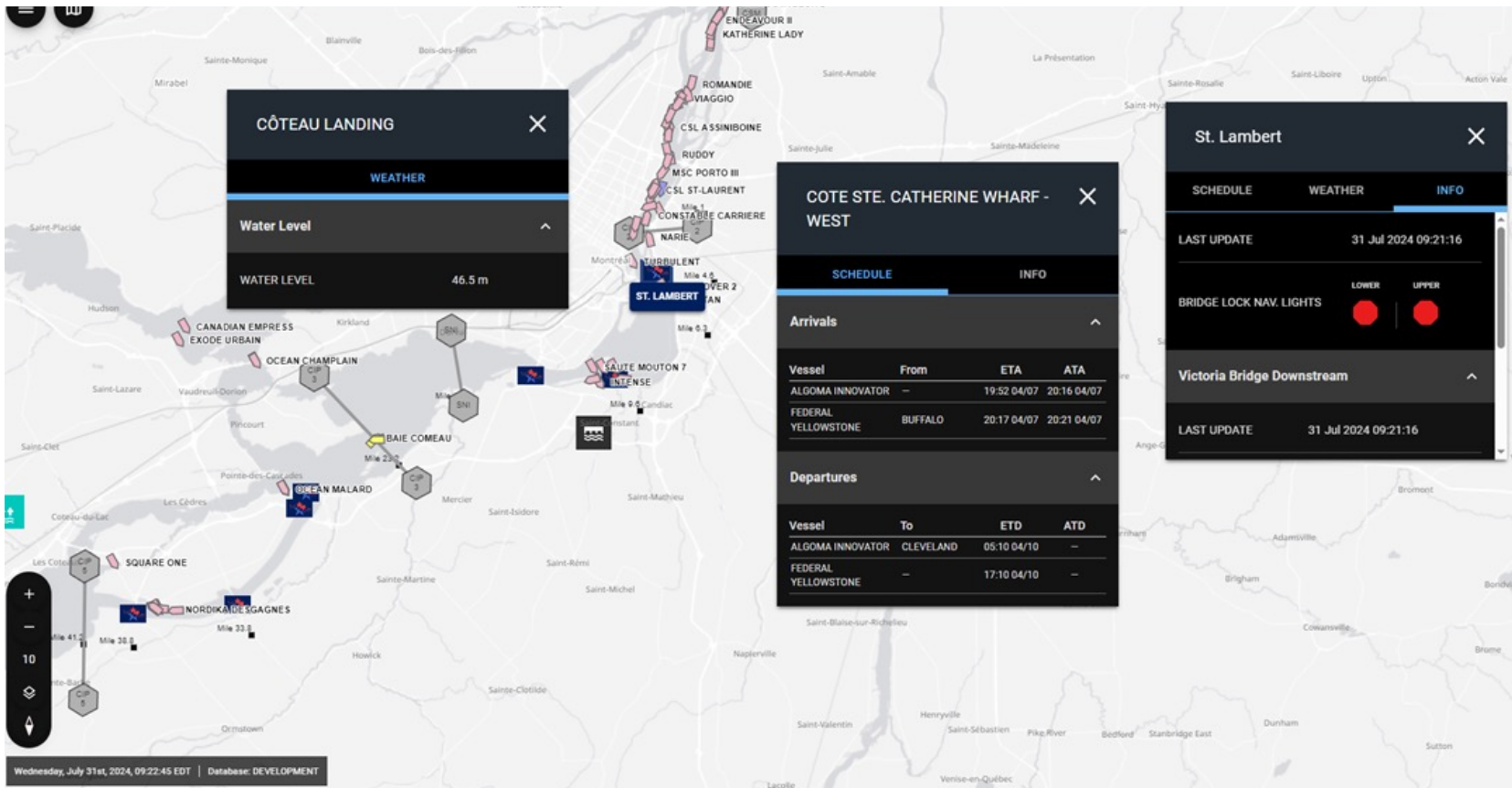
TMS on Traffic Control Workstation

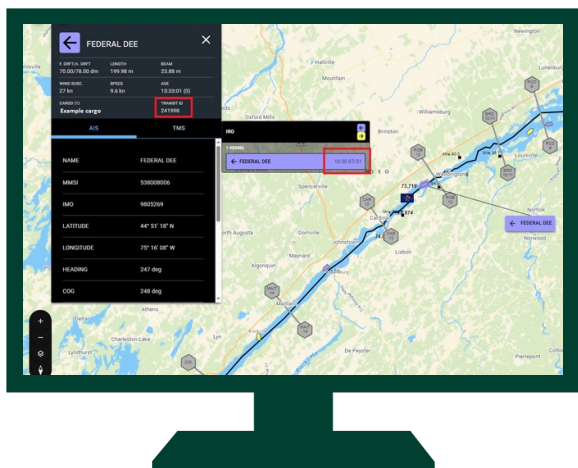


VIS on Pilot Dispatch Workstation



VIS Graphics Application





Live Demo

- Thursday, August 29 at 9:30 a.m.
- Tuesday, September 10 at 10 a.m.



To Register

Email Jack Meloche for registration details.

jmeloche@seaway.ca



Thank you